

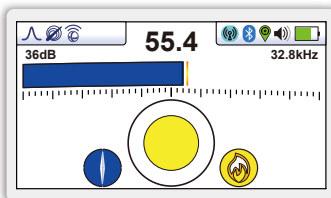


# vLoc3-ML UTILITY LOCATOR

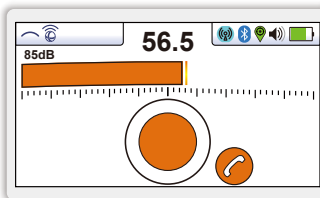
- Dual-purpose utility and EMS marker locator
- Color-coded EM distortion warnings
- Offset-locate modes - Vector and Plan View
- Cloud-based data warehousing
- Optional Bluetooth connectivity

The **vLoc3-ML utility locator** is a dual-purpose utility locator and EMS marker locator. With two sets of screened 3D antennas signal distortion is easily detected and displayed on the bright full-color display. Along with classic locate screens the vLoc3 series locators offer new locate perspective screens of Vector Locate for fully-automatic non-walkover locating, Transverse Graph showing both peak and null simultaneously providing an immediate measurement of signal distortion, Plan View showing the relative orientation of the cable at any angle, and a new graphical Sonde Mode with guidance arrows leading to the sonde location even when it is vertical.

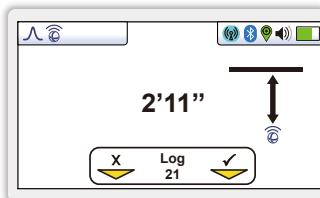
The user-configurable vLoc3-ML includes EMS marker locate mode, eight passive locate modes, fault-find mode, SD (showing the direction of outgoing current), and a range of configurable frequencies from 98Hz to 200 kHz. Audio and mechanical vibration alerts can be configured by the user providing warnings for shallow depth, overload, overhead cables, and excessive swinging. Plug-in-play options for the receiver include optional Bluetooth module usable with external GPS devices, and smart phone app support such as the VMMap utility mapping app.



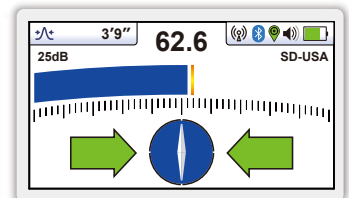
**Dual Marker Plus Utility Mode** - Shows a peak locate response for both marker and utility location simultaneously



**Dedicated Marker Mode** - Shows a peak locate response from the buried marker



**Marker Depth Readings and Logging Options** - Are shown in the Dedicated Marker Mode



**Classic Screen** - As in previous vLoc locators, with the addition of three color-coded distortion levels

**Alkaline and Li-ion Batteries**  
- Alkaline = typically 12-hours intermittent use  
- Li-ion = typically 27-hours intermittent use

**USB Data Port**  
- Update the receivers firmware  
- Download datalogs

**Accessory Port**  
- Remote Stethoscope Antenna  
- A-Frame Fault locator  
- Vehicle charging lead  
- Charge li-ion battery

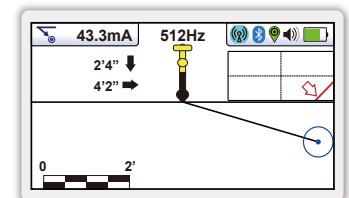
**Antenna Configuration**  
Two sets of Omnidirectional Antennas, each comprising:  
- Two Compass Antennas  
- Two Horizontal antennas  
- Two Vertical antennas  
- Additional Set of EMS transmit and receive antennas

**Ultra Bright LCD**  
- High visibility 4.3"/10cm LCD  
- Auto backlight

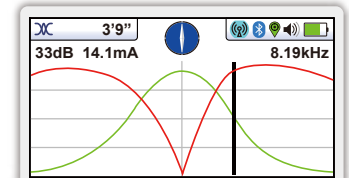
**Module Compartment**  
- Optional plug-and-play Bluetooth module

**Data Logging**  
- 50 Million record internal storage  
- GPS coordinates (if Bluetooth active)  
- Download data with MyLocator app  
- Access data VMMap Cloud app

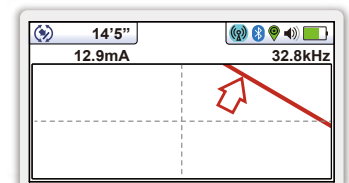
**Construction**  
- High impact ABS plastic construction  
- IP65 and NEMA 4 rating  
- Lightweight at 5.7lbs / 2.6kg



**Vector Locate** - Shows orientation, line position, and distance relative to the locator in 3D



**Transverse Plot Screen** - Is used to display the peak and null to compare distortion shape

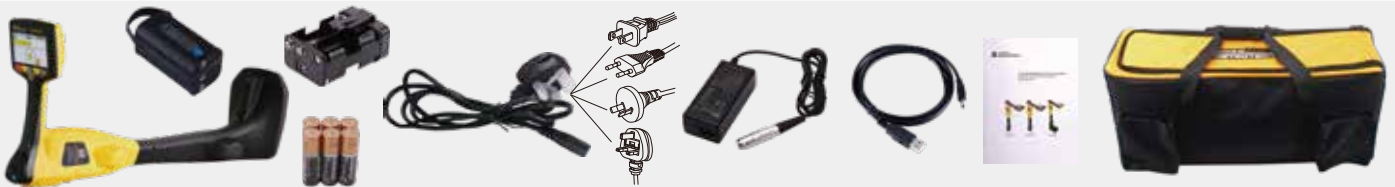


**Plan View Screen** - Displays the theoretical line in 2D from above ground in omnidirectional mode



vLoc3-ML Receiver Specifications																																					
<b>Construction</b>	High impact ABS injection molded housing																																				
<b>Weight and dimensions</b>	5.7lbs (2.6kg) / 12.2in(L) x 6.3in(W) x 28.4in(H) (310mm x 159mm x 721mm)																																				
<b>Display</b>	Transmissive 480 x 272 Pixel, 16-bit Color, High Visibility LCD, 4.3"/10cm LCD																																				
<b>Battery options</b>	Rechargeable custom Lithium-ion batteries with 100-240V AC mains charger Six x AA Alkaline batteries																																				
<b>Battery life</b>	Lithium-ion – typically 27-hours intermittent use at 70°F (21°C) Alkaline – typically 12 hours intermittent use at 70°F (21°C)																																				
<b>Operating frequencies</b>	Utility locate: Configurable frequencies from 98Hz to 200 kHz <ul style="list-style-type: none"> <li>• Power 50Hz and 60Hz</li> <li>• Radio - 10kHz - 22.7kHz bandwidth</li> <li>• Signal Direction (SD) - enhanced frequency giving direction of the outgoing transmitter current</li> </ul> <b>Marker Locate:</b> <table border="1"> <thead> <tr> <th>Ref #</th> <th>Utility</th> <th>Fre. (Hz)</th> <th>Ref #</th> <th>Utility</th> <th>Fre. (Hz)</th> <th>Ref #</th> <th>Utility</th> <th>Fre. (Hz)</th> </tr> </thead> <tbody> <tr> <td>1</td> <td>Power (Red)</td> <td>169,800</td> <td>4</td> <td>Telephone (Orange)</td> <td>101,400</td> <td>7</td> <td>Non-potable Water (Purple)</td> <td>66,350</td> </tr> <tr> <td>2</td> <td>Water (Blue)</td> <td>145,700</td> <td>5</td> <td>Gas (Yellow)</td> <td>83,000</td> <td>8</td> <td>EDF (French Power) (natural)</td> <td>40,000</td> </tr> <tr> <td>3</td> <td>Sanitary (Green)</td> <td>121,600</td> <td>6</td> <td>CATV (Orange/Black)</td> <td>77,000</td> <td>9</td> <td>Power - Europe (Blue/Red)</td> <td>134,000</td> </tr> </tbody> </table>	Ref #	Utility	Fre. (Hz)	Ref #	Utility	Fre. (Hz)	Ref #	Utility	Fre. (Hz)	1	Power (Red)	169,800	4	Telephone (Orange)	101,400	7	Non-potable Water (Purple)	66,350	2	Water (Blue)	145,700	5	Gas (Yellow)	83,000	8	EDF (French Power) (natural)	40,000	3	Sanitary (Green)	121,600	6	CATV (Orange/Black)	77,000	9	Power - Europe (Blue/Red)	134,000
Ref #	Utility	Fre. (Hz)	Ref #	Utility	Fre. (Hz)	Ref #	Utility	Fre. (Hz)																													
1	Power (Red)	169,800	4	Telephone (Orange)	101,400	7	Non-potable Water (Purple)	66,350																													
2	Water (Blue)	145,700	5	Gas (Yellow)	83,000	8	EDF (French Power) (natural)	40,000																													
3	Sanitary (Green)	121,600	6	CATV (Orange/Black)	77,000	9	Power - Europe (Blue/Red)	134,000																													
<b>Operating modes</b>	Marker locate, dual marker/utility locate mode, Classic locate, Transverse Graph, Plan View, Vector locate and sonde modes.																																				
<b>Data logging and transfer</b>	50 Million records - Records include depth, current, frequency, mode, gain setting, signal strength, GPS coordinate, date and time (if Bluetooth active) Download data from the receiver using the free MyLocator3 desktop app, save as xlx, txt, shp and kml files																																				
<b>Environmental</b>	IP65 and NEMA 4																																				

## What's in the box



## Popular Accessories (See our Accessories Brochure for a full list of receiver and transmitter accessories)



## Compatible Transmitters

### 1- Watt Transmitters



VM-550FF/VM-560FF

### 5-Watt Transmitter



Loc3-5Tx

### 10-Watt Transmitter



Loc3-10Tx

### 25-Watt Transmitter



Loc3-25Tx

Local Vivax-Metrotech Distributor:

### Vivax-Metrotech Corporation

3251 Olcott Street, Santa Clara, CA 95054, USA

**T/Free: 1-800-446-3392**

**Tel: +1-408-734-3880**

www.vivax-metrotech.com

Tag us on social media @vivax\_metrotech



V1.5

Please visit our website for full product specifications.